

HOUSE ME

TRANSPORTABLE HOMES

NEW ZEALAND'S MOST AFFORDABLE
TINY HOME SOLUTION



2023

houseme.co.nz



Our Units

Here at HouseMe we design and build high-quality, insulated transportable homes in our purpose-built Takanini factory. At the heart of HouseMe's innovative methodology is the integration and control of all phases. HouseMe utilises NZ made products wherever possible and uses high-strength Australian-sourced structural steel. Most designs are covered by multi-proof certification and delivery is organised and provided for every unit by the dedicated in-house transport team.

Important: The width of all units is 3.0m at roofline (transport requirement) and 2.8m at exterior walls, except for 12.5m x 3.6m extra wide unit.

Code Compliance Certificate (CCC)

All new HouseMe units are issued with a Code Compliance Certificate (CCC).

The CCC is a legally recognised document that verifies that the building work carried out is compliant with the New Zealand Building Code.

The CCC is specific to the factory built HouseMe unit and is separate to any site activity i.e. foundations or sewage.

Units are delivered having passed a final building inspection with CCC documentation issued approximately 6 weeks later.



Sleepouts



2nd Dwellings



First Home Buying



Commercial Office Space



Farm Accommodation



Airbnb



Holiday Park Accommodation



Cabins



The HouseMe Process

1. Choose a Design **Kiwi owned & made**

Choose from any of our standard floor plans, or share your ideas with our in-house designer for a custom layout that suits. Our options range from a small open plan studio, up to a self-contained 2 bedroom home. All options are competitively priced - no budget blowouts here at HouseMe. Our units are constructed using top-quality, locally-sourced materials. We're proud to say that the primary structure is made of NZ COLORSTEEL®. NZ made, built for NZ environments.



2. Agreement **Let's get the ball rolling**

Upon deciding which unit is the right fit, we immediately put steps in place to 'get the ball rolling'. Our goal is to get your new purchase to you in a timely and efficient manner. Upon receiving your deposit we will work with you to finalise the specifications and sales agreement. HouseMe are pleased to partner with Squirrel should you require additional funds to help make your dream a reality. The payment options are practical, transparent and sensible. A site visit may be required to ensure everything goes to plan.

3. Production **The nuts and bolts**

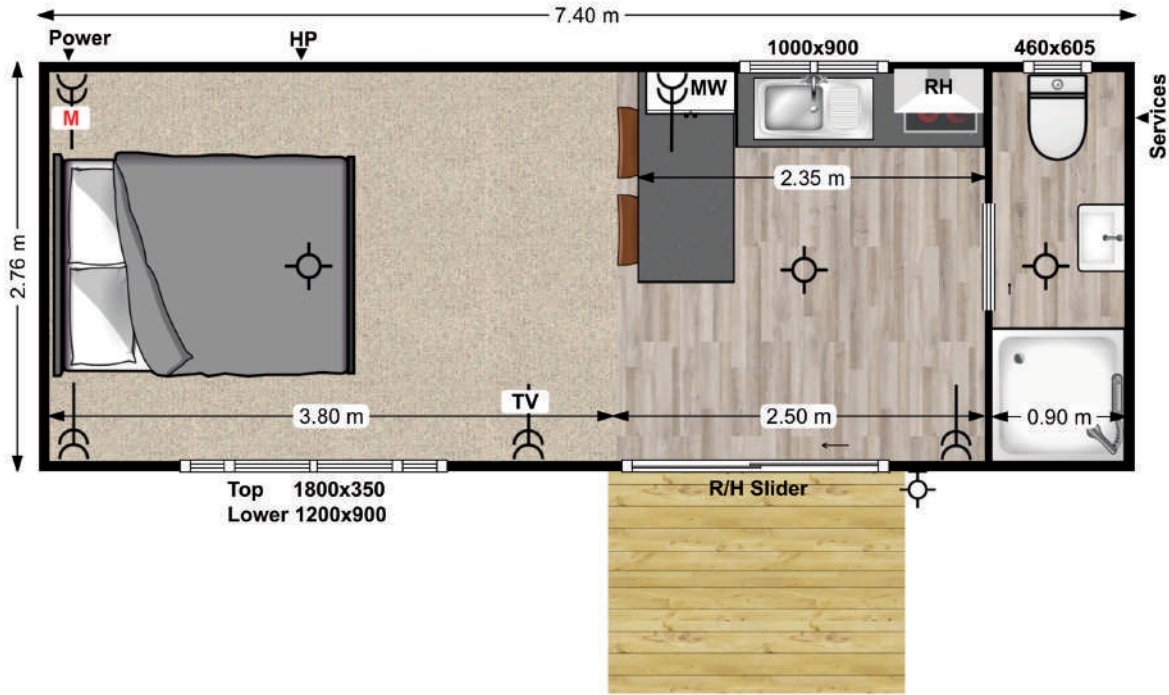
Now we are really moving forward! All our units are made-to-order. Our purpose-built factory in Takanini houses a production team of highly-skilled employees, and we are committed to constructing your unit to the highest of standards. HouseMe are the industry benchmark when it comes to manufacturing. Your new unit leaves our hub professionally certified and ready for use.

4. Delivery **It's all yours!**

We'll liaise with you directly to organise a time that works for you, and you'll know exactly what is going to happen and when. The delivery and installation team are a crucial part of our business, and you can have peace of mind knowing your delivery is taken seriously. We often receive feedback on how meticulous and professional the HouseMe team are.

Occasionally an installation may require additional services which we'll organise to keep the process hassle-free. When we leave, it's all yours - step inside and make yourself at home.





7.4 Open Plan Studio

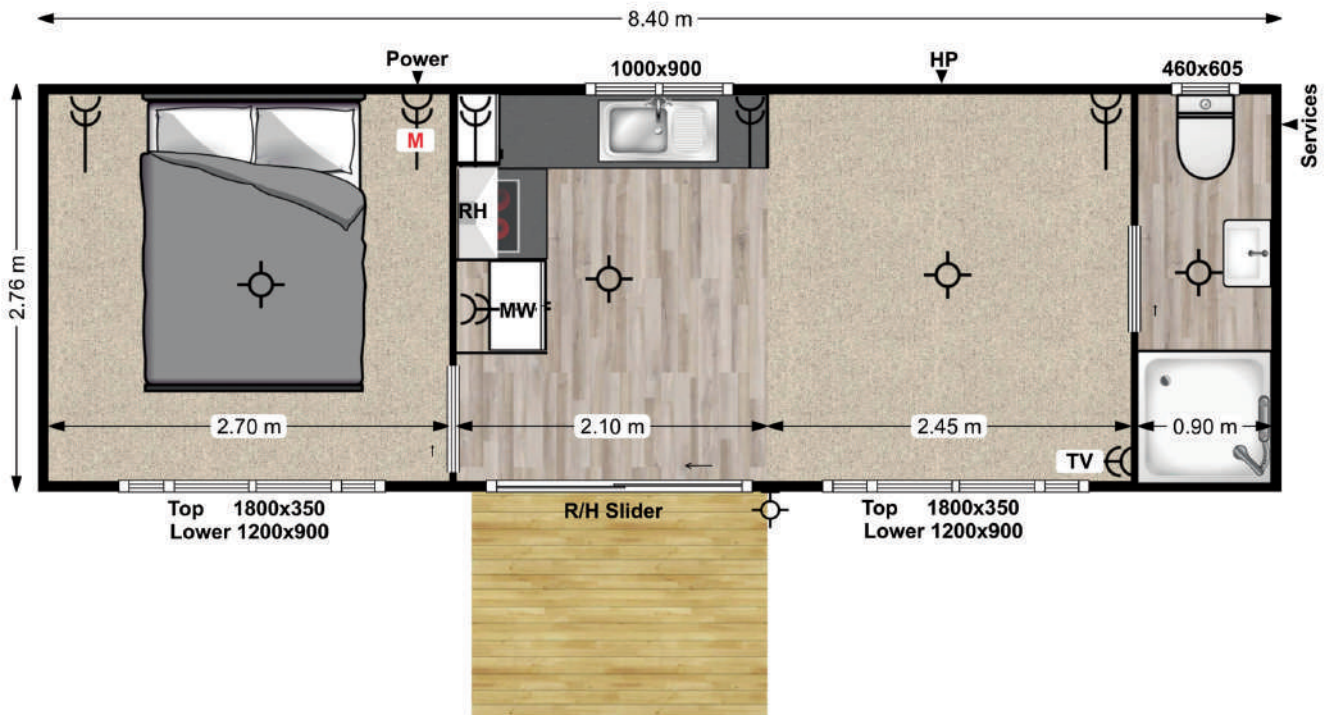
7.4 x 3M (ON SKIDS) | PRICE: **\$69,000** (GST INCL.)

Spec List

- Approximately **20.7m²** in size
- Code Compliance Certificate (unit only)
- Electrical & gas certificates
- Base - 2x galvanised steel skids
- Underfloor Insulation
- Underlay
- Carpet & vinyl
- 3x internal lights & 1x external light
- 5x double power points, 1x USB
- TV outlet and wall bracket
- Pre-wire for heat pump
- 16 Amp power supply (15m ext. lead)
- Full-length curtains covering ranchslider
- 4x windows with roller blinds
- Opening top window
- Double Glazing
- Kitchen with breakfast bar
- 2 burner electric hob
- Splashback
- Rangehood
- Bathroom vanity & extractor fan
- Mirror cabinet, towel holder & toilet roll holder
- 900 x 900mm shower
- Toilet with macerator pump
- 50m waste pipe
- Califont with 2 gas bottles
- Exterior awning + deck

Optional Extras

- Wardrobes
- All vinyl (no carpet)
- Extra window
- Extra power points
- Magnetic insect screens
- Fridge
- Extra deck
- Gas cooking upgrade



8.4 One Bedroom

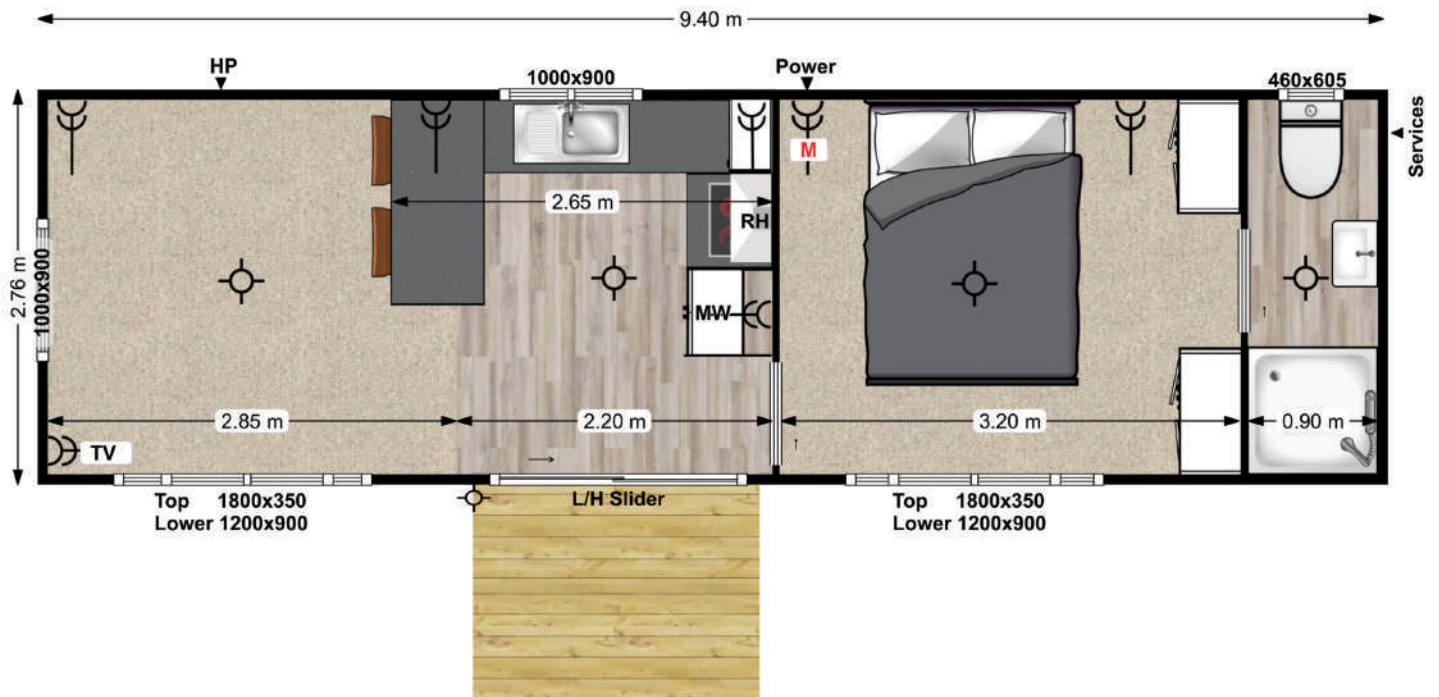
8.4 x 3M (ON SKIDS) | PRICE: **\$77,000** (GST INCL.)

Spec List

- Approximately **23.5m²** in size
- Code Compliance Certificate (unit only)
- Electrical & gas certificates
- Base - 2x galvanised steel skids
- Underfloor Insulation
- Underlay
- Carpet & vinyl
- Smoke alarm
- 4x internal lights & 1x external light
- 7x double power points, 1x USB
- TV outlet and wall bracket
- Pre-wire for heat pump
- 16 Amp power supply (15m ext. lead)
- Full-length curtains covering ranchslider
- 6x windows with roller blinds
- Opening top windows
- Double Glazing
- Kitchen with fridge tower
- 2 burner electric hob
- Splashback
- Rangehood
- Bathroom vanity & extractor fan
- Mirror cabinet, towel holder & toilet roll holder
- 900 x 900mm shower
- Toilet with macerator pump
- 50m waste pipe
- Califont with 2 gas bottles
- Exterior awning + deck

Optional Extras

- Wardrobes
- All vinyl (no carpet)
- Extra window
- Extra power points
- Magnetic insect screens
- Fridge
- Extra deck
- Extra ranchslider
- Gas cooking upgrade



9.4 One Bedroom Superior

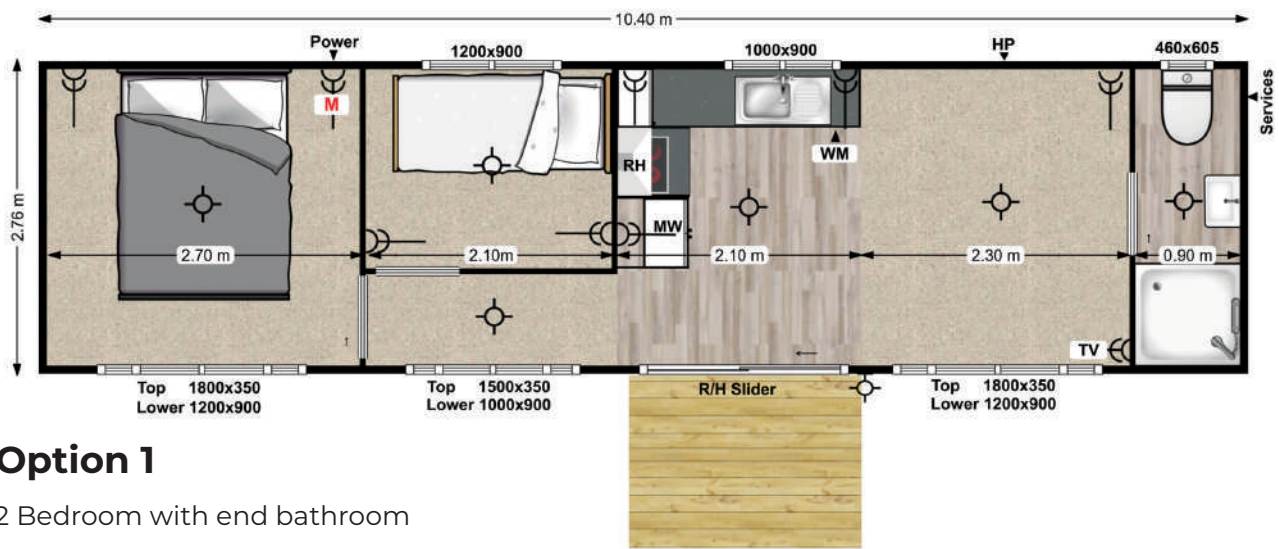
9.4 x 3M (ON SKIDS) | PRICE: **\$85,000** (GST INCL.)

Spec List

- Approximately **26.3m²** in size
- Code Compliance Certificate (unit only)
- Electrical & gas certificates
- Base - 2x galvanised steel skids
- Underfloor Insulation
- Bedroom with 2 wardrobes
- Underlay
- Carpet & vinyl
- Smoke alarm
- 4x internal lights & 1x external light
- 7x double power points, 1x USB
- TV outlet and wall bracket
- Pre-wire for heat pump
- 16 Amp power supply (15m ext. lead)
- Full-length curtains covering ranchslider
- 6x windows with roller blinds
- Opening top windows
- Double Glazing
- Kitchen with fridge tower & breakfast bar
- 2 burner electric hob
- Splashback
- Rangehood
- Bathroom vanity & extractor fan
- Mirror cabinet, towel holder & toilet roll holder
- 900 x 900mm shower
- Toilet with macerator pump
- 50m waste pipe
- Califont with 2 gas bottles
- Exterior awning + deck

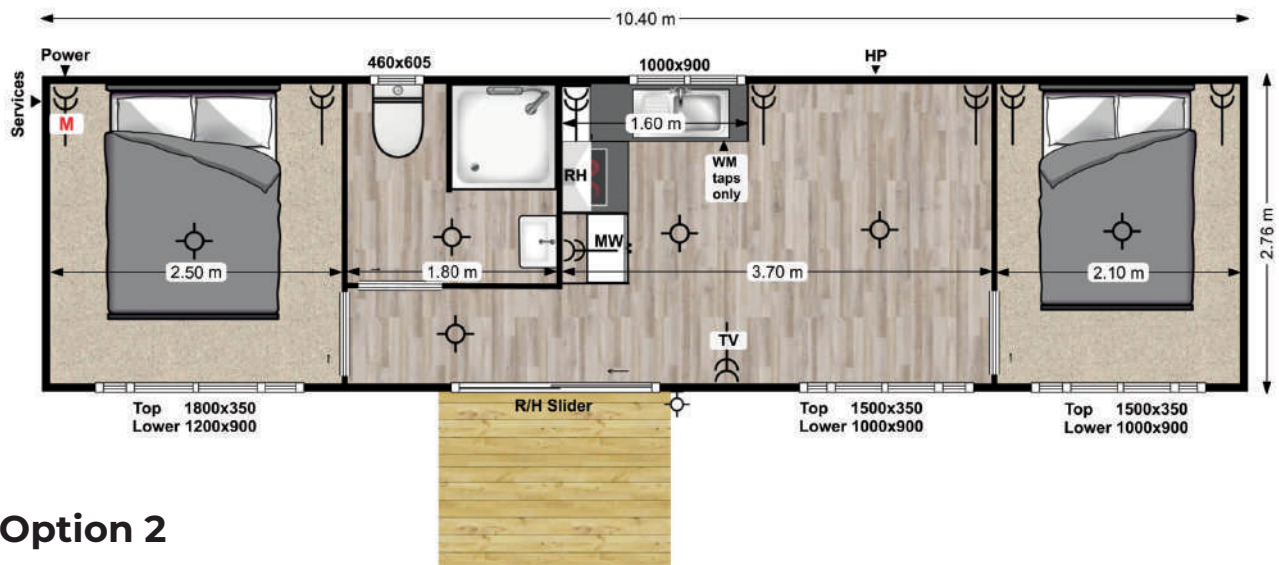
Optional Extras

- Wardrobes
- All vinyl (no carpet)
- Extra window
- Extra power points
- Magnetic insect screens
- Fridge
- Extra deck
- Extra ranchslider
- Gas cooking upgrade



Option 1

2 Bedroom with end bathroom



Option 2

2 Bedroom with central bathroom

10.4 Two Bedroom

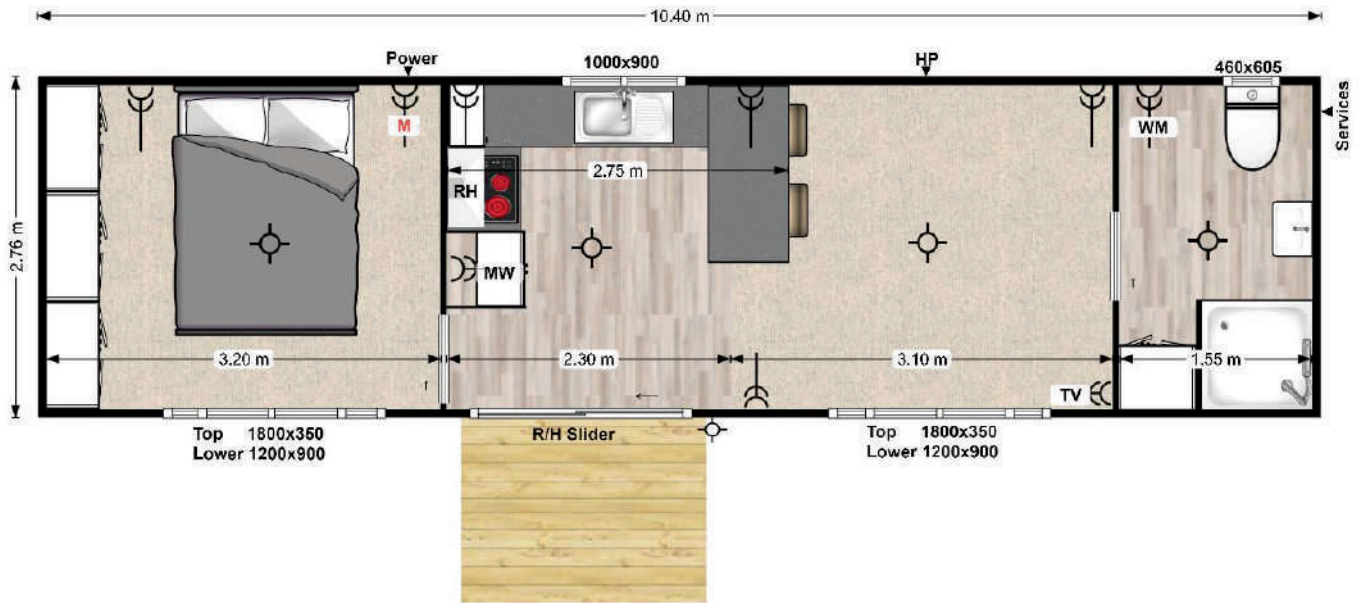
10.4 x 3M (ON SKIDS) | PRICE: **\$91,000** (GST INCL.)

Spec List

- Approximately **29.1m²** in size
- Code Compliance Certificate (unit only)
- Electrical & gas certificates
- Base - 2x galvanised steel skids
- Underfloor Insulation
- Underlay
- Carpet & vinyl
- Smoke alarm
- 6x internal lights & 1x external light
- 9x double power points, 1x USB
- TV outlet and wall bracket
- Pre-wire for heat pump
- 16 Amp power supply (15m ext. lead)
- Full-length curtains covering ranchslider
- 9x windows with roller blinds
- Opening top windows
- Double Glazing
- Kitchen with fridge tower
- 2 burner electric hob
- Splashback
- Rangehood
- Bathroom vanity & extractor fan
- Mirror cabinet, towel holder & toilet roll holder
- 900 x 900mm shower
- Toilet with macerator pump
- 50m waste pipe
- Calfont with 2 gas bottles
- Exterior awning + deck

Spec List

- Wardrobes
- All vinyl (no carpet)
- Extra window
- Extra power points
- Magnetic insect screens
- Fridge
- Extra deck
- Extra ranchslider
- Gas cooking upgrade



10.4 Deluxe One Bedroom

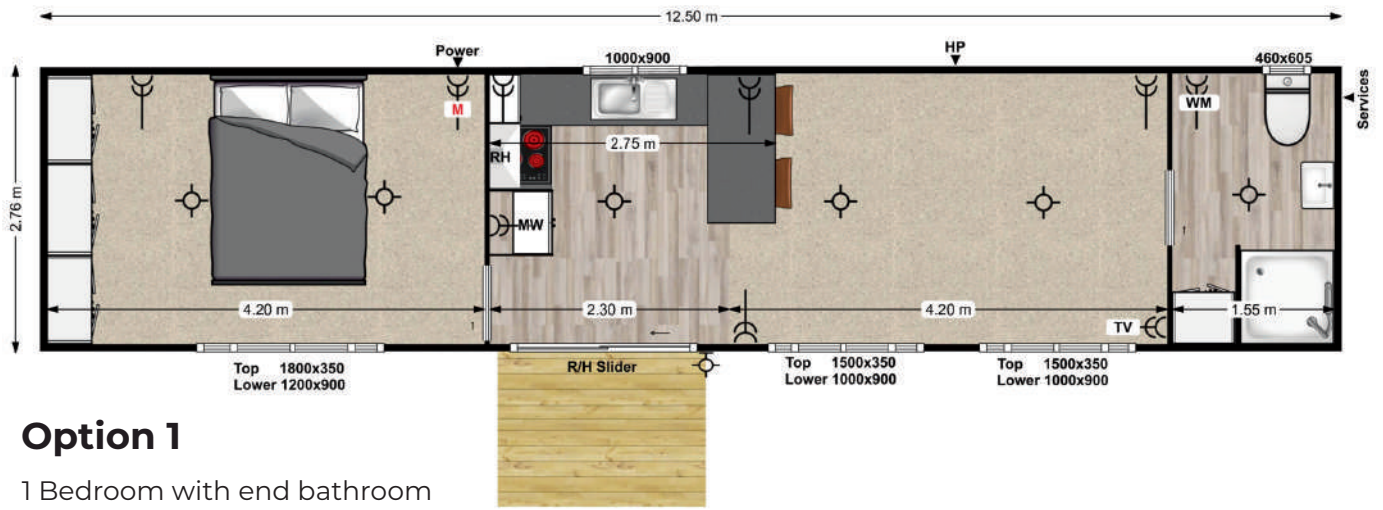
10.4 x 3M (ON SKIDS) | PRICE: **\$94,000** (GST INCL.)

Spec List

- Approximately **29.1m²** in size
- Code Compliance Certificate (unit only)
- Electrical & gas certificates
- Base - 2x galvanised steel skids
- Underfloor Insulation
- Bedroom with 3 wardrobes
- Underlay
- Carpet & vinyl
- Smoke alarm
- 4x internal lights & 1x external light
- 9x double power points, 1x USB
- TV outlet and wall bracket
- Pre-wire for heat pump
- 32 Amp power supply (15m ext. lead)
- Full-length curtains covering ranchslider
- 6x windows with roller blinds
- Opening top windows
- Double Glazing
- Upgraded kitchen with breakfast bar & extra storage
- Oven
- 4 burner electric hob
- Splashback
- Rangehood
- Large Bathroom with plumbing/wiring for washing machine & storage cabinet
- Bathroom vanity & extractor fan
- Mirror cabinet, towel holder & toilet roll holder
- 900 x 900mm shower
- Toilet with macerator pump
- 50m waste pipe
- Califont with 2 gas bottles
- Exterior awning + deck

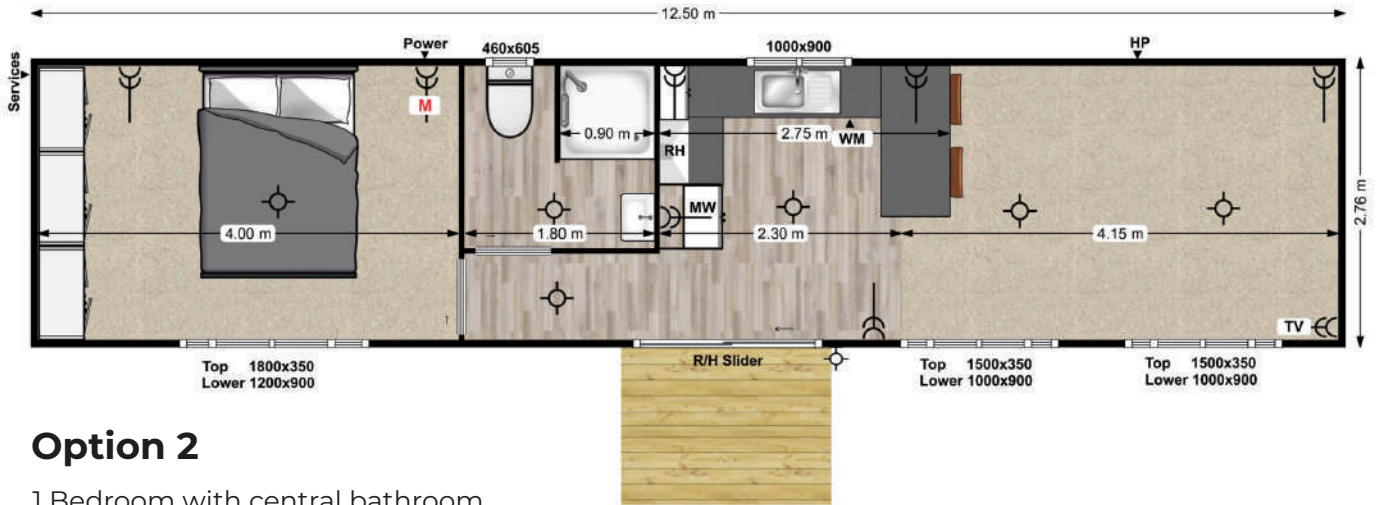
Optional Extras

- All vinyl (no carpet)
- Extra window
- Extra power points
- Magnetic insect screens
- Fridge
- Extra deck
- Extra ranchslider
- Gas cooking upgrade



Option 1

1 Bedroom with end bathroom



Option 2

1 Bedroom with central bathroom

12.5 Deluxe One Bedroom

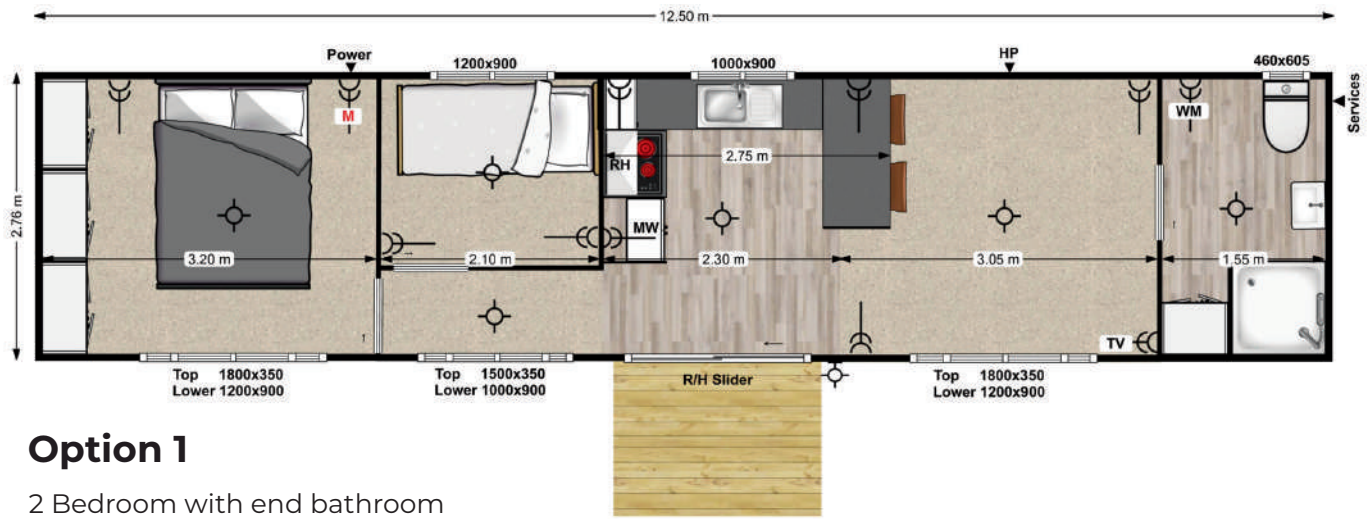
12.5 x 3M (ON SKIDS) | PRICE: **\$109,000** (GST INCL.)

Spec List

- Approximately **32m²** in size
- Code Compliance Certificate (unit only)
- Electrical & gas certificates
- Base - 2x galvanised steel skids
- Underfloor Insulation
- Large bedroom with 3 wardrobes
- Underlay
- Carpet & vinyl
- Smoke alarm
- 5x internal lights & 1x external light
- 8 or 9x double power points, 1x USB
- TV outlet and wall bracket
- Pre-wire for heat pump
- 32 Amp power supply (15m ext. lead)
- Full-length curtains covering ranchslider
- 8x windows with roller blinds
- Opening top windows
- Double Glazing
- Upgraded kitchen with breakfast bar & extra storage
- Oven
- 4 burner electric hob
- Splashback
- Rangehood
- Large Bathroom & storage cabinet
- Plumbing/wiring for washing machine
- Bathroom vanity & extractor fan
- Mirror cabinet, towel holder & toilet roll holder
- 900 x 900mm shower
- Toilet with macerator pump
- 50m waste pipe
- Calfont with 2 gas bottles
- Exterior awning + deck

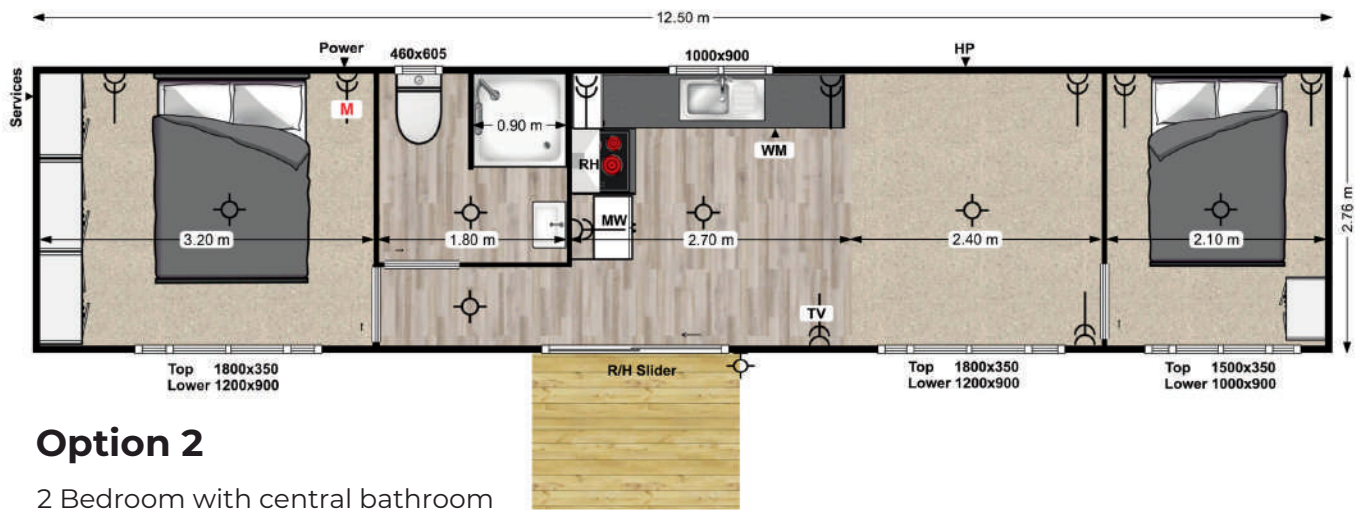
Optional Extras

- All vinyl (no carpet)
- Extra window
- Extra power points
- Magnetic insect screens
- Fridge
- Extra deck
- Extra ranchslider
- Gas cooking upgrade



Option 1

2 Bedroom with end bathroom



Option 2

2 Bedroom with central bathroom

12.5 Deluxe Two Bedroom

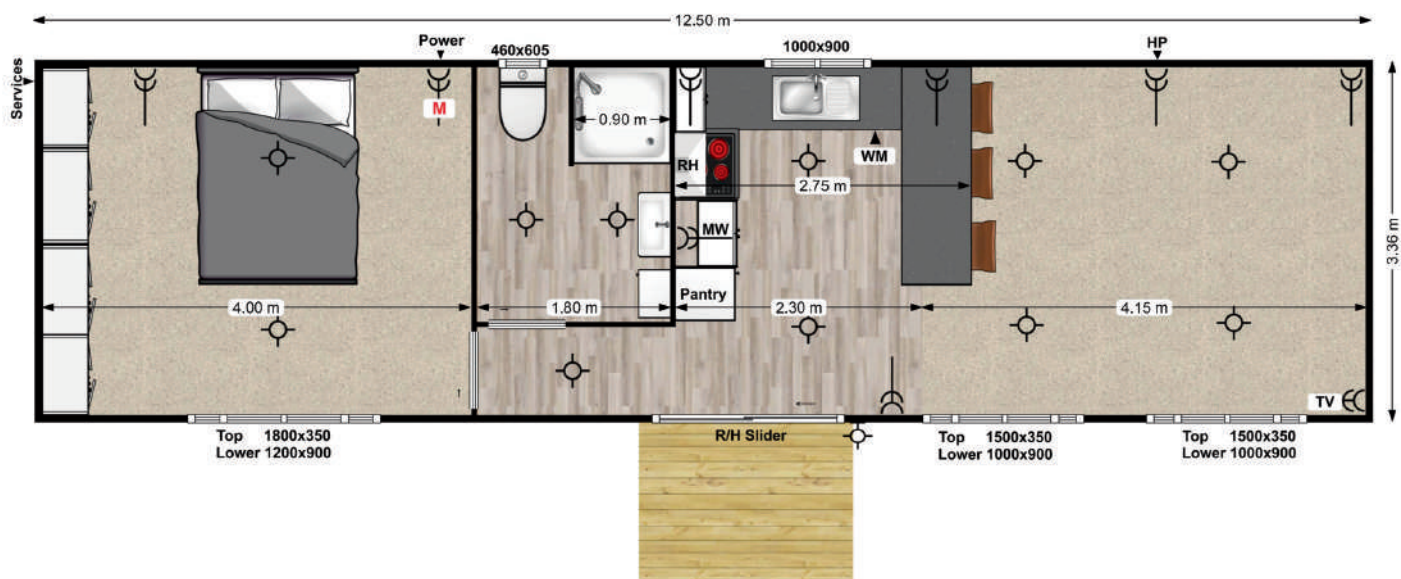
12.5 x 3M (ON SKIDS) | PRICE: **\$112,000** (GST INCL.)

Spec List

- Approximately **35m²** in size
- Code Compliance Certificate (unit only)
- Electrical & gas certificates
- Base - 2x galvanised steel skids
- Underfloor Insulation
- Large bedroom with 3 wardrobes
- Secondary bedroom/office/storage room
- Underlay
- Carpet & vinyl
- Smoke alarm
- 6x internal lights & 1x external light
- 10x double power points, 1x USB
- TV outlet and wall bracket
- Pre-wire for heat pump
- 32 Amp power supply (15m ext. lead)
- Full-length curtains covering ranchslider
- 9x windows with roller blinds
- Opening top windows
- Double Glazing
- Upgraded kitchen with breakfast bar & extra storage
- Oven
- 4 burner electric hob
- Splashback
- Rangehood
- Large Bathroom & storage cabinet
- Plumbing/wiring for washing machine Bathroom vanity & extractor fan
- Mirror cabinet, towel holder & toilet roll holder
- 900 x 900mm shower
- Toilet with macerator pump
- 50m waste pipe
- Califont with 2 gas bottles
- Exterior awning + deck

Optional Extras

- All vinyl (no carpet)
- Extra window
- Extra power points
- Magnetic insect screens
- Fridge
- Extra deck
- Extra ranchslider
- Gas cooking upgrade



12.5 x 3.6 Deluxe One Bedroom

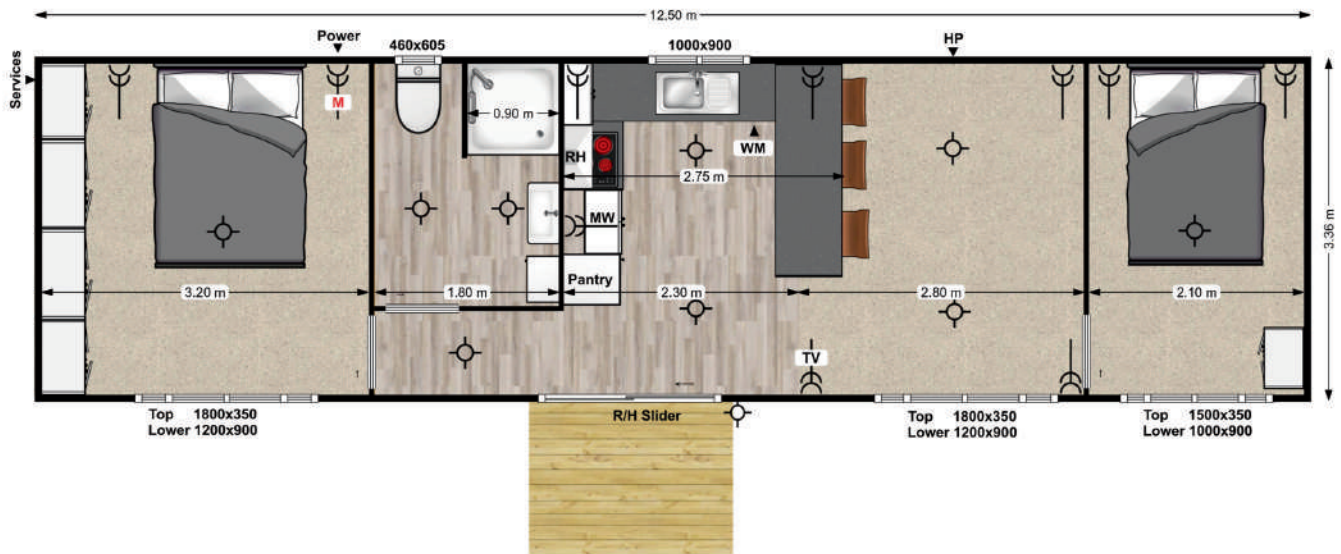
12.5 x 3.6M (ON SKIDS) | PRICE: **\$137,500** (GST INCL.)

Spec List

- Approximately **42.5m²** in size
- Code Compliance Certificate (unit only)
- Electrical & gas certificates
- Base - 2x galvanised steel skids
- Underfloor Insulation
- Large bedroom with 4 wardrobes
- Underlay
- Carpet & vinyl
- Smoke alarm
- 6x internal & 1x external lights
- 10x double power points, 1x USB
- TV outlet and wall bracket
- Pre-wire for heat pump
- 32 Amp power supply (15m ext. lead)
- Full-length curtains covering ranchslider
- 8x windows with roller blinds
- Opening top windows
- Double Glazing
- Upgraded kitchen with long breakfast bar & extra storage
- Full length pantry
- Oven
- 4 burner electric hob
- Splashback
- Rangehood
- Space under kitchen bench for front loading washing machine
- Centralised bathroom with a storage cabinet & extractor fan
- Mirror cabinet, towel holder & toilet roll holder
- 900 x 900mm shower
- Toilet with macerator pump
- 50m waste pipe
- Calfont with 2 gas bottles
- Exterior awning + deck

Optional Extras

- All vinyl (no carpet)
- Extra window
- Extra power points
- Magnetic insect screens
- Fridge
- Extra deck
- Extra ranchslider
- Gas cooking upgrade



**OUR BEST
SELLER!**

12.5 x 3.6 Deluxe Two Bedroom

12.5 x 3.6M (ON SKIDS) | PRICE: **\$138,000** (GST INCL.)

Spec List

- Approximately **42.5m²** in size
- Code Compliance Certificate (unit only)
- Electrical & gas certificates
- Base - 2x galvanised steel skids
- Underfloor Insulation
- Large bedroom with 4 wardrobes
- Secondary bedroom/office/storage room
- Underlay
- Carpet & vinyl
- Smoke alarm
- 6x internal & 1x external lights
- 10x double power points, 1x USB
- TV outlet and wall bracket
- Pre-wire for heat pump
- 32 Amp power supply (15m ext. lead)
- Full-length curtains covering ranchslider
- 8x windows with roller blinds
- Opening top windows
- Double Glazing
- Upgraded kitchen with long breakfast bar & extra storage
- Full length pantry
- Oven
- 4 burner electric hob
- Splashback
- Rangehood
- Space under kitchen bench for front loading washing machine
- Centralised bathroom with a storage cabinet & extractor fan
- Mirror cabinet, towel holder & toilet roll holder
- 900 x 900mm shower
- Toilet with macerator pump
- 50m waste pipe
- Calfont with 2 gas bottles
- Exterior awning + deck

Optional Extras

- All vinyl (no carpet)
- Extra window
- Extra power points
- Magnetic insect screens
- Fridge
- Extra deck
- Extra ranchslider
- Gas cooking upgrade



12.5 x 4.4 Deluxe Three Bedroom

12.5 x 4.4M (ON SKIDS) | PRICE: **\$169,000** (GST INCL.)

Spec List

- Approximately **50.0m²** in size
- Code Compliance Certificate (unit only)
- Electrical & gas certificates
- Base - 2x galvanised steel skids
- Underfloor Insulation
- Large bedroom with 4 wardrobes
- Secondary bedroom, office, storage rooms
- Underlay
- Carpet & vinyl
- Smoke alarm
- 11x internal & 1x external lights
- 14x double power points, 1x USB
- TV outlet and wall bracket
- Pre-wire for heat pump
- 32 Amp power supply (15m ext. lead)
- Full-length curtains covering ranchslider
- 10x windows with roller blinds
- Opening top windows
- Double Glazing
- Full length pantry
- Oven
- 4 burner electric hob
- Splashback
- Rangehood
- Space under kitchen bench for dishwasher
- Centralised bathroom with storage cabinet, extractor fan, washing machine
- Mirror cabinet, towel holder & toilet roll holder
- 900 x 900mm shower
- Gravity-fed plumbing
- Califont with 2 gas bottles
- Exterior awning + deck

Optional Extras

- All vinyl (no carpet)
- Extra power points
- Magnetic insect screens
- Fridge
- Extra deck
- Gas cooking upgrade





HOUSE

TRANSPORTABLE HOMES

ME

Website www.houseme.co.nz

Freephone 0800 HOUSEME (0800 468736)

Phone 09 296 9330

Email sales@houseme.co.nz

Head Office 23 Inlet Road, Takanini, Auckland



Find us on
Facebook

HouseMe Transportable Homes



@housemenz